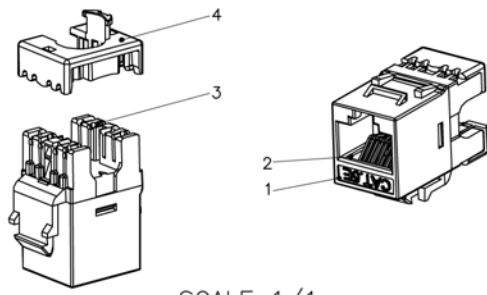
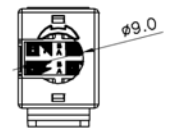
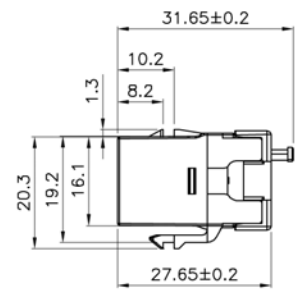
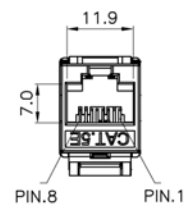
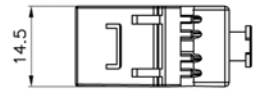


NOTE: ALL MATERIAL COMPLIANT ROHS STANDARD

REVISION INFORMATION			
Rev.	Rev. Date	Modified By	Brief Description



SCALE 1/1



Specification :

- Material :
1. RJ45 Jack :
 - 1-1. Housing : ABS+PC, UL 94-V0, White color.
 - 1-2. Contact Bracket : PC, UL 94-V2, Transparent color.
 2. RJ45 Jack Contact :
 - 2-1. Material : Phosphor Bronze with Nickel plated.
 - 2-2. Finish : 50 micro-inch Gold plated on Plug contact area.
 3. IDC :
 - 3-1. Housing : PC+Glass Fiber, Grey color(RAL7035), UL 94V-2.
 - 3-2. Terminal : Phosphor Bronze with Tin plated.
 4. IDC Cap : PC+Glass Fiber, UL 94-HB, White color.
 5. PCB : FR4, UL 94V-0.

- Performance :
- a. T568A & T568B wiring.
 - b. Insertion Force : 20N max. (IEC 60603-7-4).
 - c. Retention Strength : 7.7 kg between Jack and Plug.
 - d. Operating Temperature : -10°C to 60°C. (ISO/IEC 11801, ANSI/TIA/EIA 568 B.2).
 - e. Life(mating cycles) :
 - e-1. Jack : 750 cycles min. (ISO/IEC 11801, IEC 60603-7-4.)
 - e-2. IDC : Suitable for 23-26 AWG stranded and solid wire, compatible with both 110 & Krone punch down tools.
 - f. The Cat.5E transmission performance is in compliance with the ANSI/TIA/EIA 568 B.2 standard.

SFCABLE.COM

NO.	PART NAME	SPECIFICATION DESCRIPTION	QTY	UNIT
③				
②				
①				

DRAWN BY	DATE: 2012/08/25	DESCRIPTION: Cat.5E RJ45 Slim Keystone Jack KJ28, Black 110 Punch Down
CHECKED BY	SHEET 1 of 1	ITEM NO. 1016-SF-06
APPROVED BY	SCALE 1:1	REV. 00 UNIT: mm