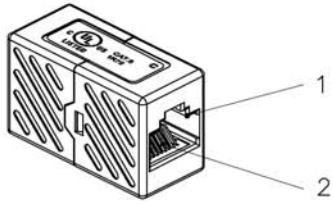
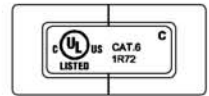
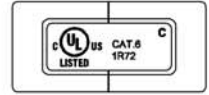
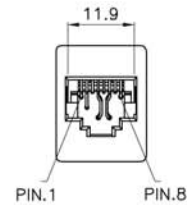
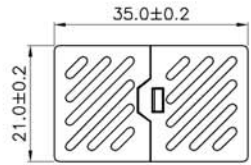
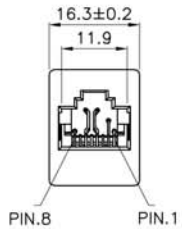


NOTE: ALL MATERIAL COMPLIANT ROHS STANDARD

REVISION INFORMATION			
Rev.	Rev. Date	Modified By	Brief Description



SCALE 1/1



Specification :

Material :

1. RJ45 Jack :
  - 1-1. Housing : ABS, UL 94V-0.
  - 1-2. Contact Bracket : PC, UL 94V-2, Transparent color.
2. RJ45 Jack Contact :
  - 2-1. Material : Phosphor Bronze with Nickel plated.
  - 2-2. Finish : 50 micro-inch Gold plated on Plug contact area.
3. PCB : FR4, UL 94V-0.

Performance :

- a. Insertion force : 20N max.(IEC 60603-7-4)
- b. Retention strength : 7.7 kg between Jack and Plug.
- c. Operating temperature : -10°C to 60°C. (ISO/IEC 11801, ANSI/TIA/EIA 568 B.2)
- d. Life(mating cycles) : 750 cycles min. (ISO/IEC 11801, IEC 60603-7-4)
- e. The Cat.6 transmission performance is in compliance with the ANSI/TIA/EIA 568 B.2-1 standard.

Remark : AAEBB01011411XX  
(1)

(1) XX : Color  
01=Black, 05=White



DRAWN BY	DATE: 2012/08/25	DESCRIPTION: Cat.6 RJ45 Inline Coupler White
CHECKED BY	SHEET 1 of 1	ITEM NO. 1020-SF-04
APPROVED BY	SCALE 1:1	REV. 00 UNIT: mm

NO.	PART NAME	SPECIFICATION DESCRIPTION	QTY	UNIT
③				
②				
①				