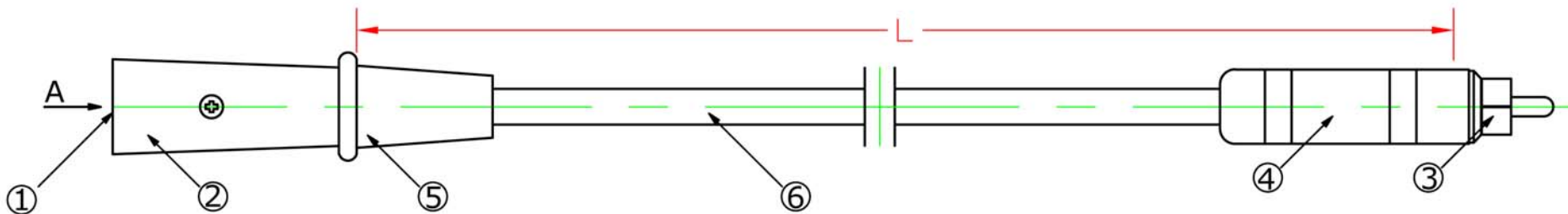
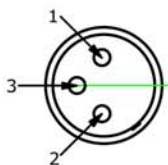


NOTE: ALL MATERIAL COMPLIANT ROHS STANDARD.

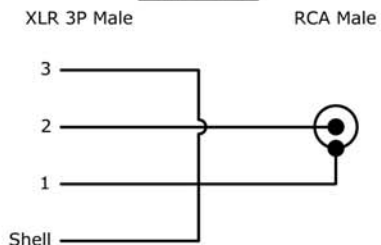
REVISION INFORMATION			
Rev.	Rev. Date	Modified By	Brief Description



A Side View



**CONNECTION**



PART NO.	LENGTH(L)
2032-SF-80	6Ft 1830±50
2032-SF-82	12Ft 3660±80
2032-SF-85	25Ft 7620±80

**ELECTRICAL TESTING**

1. CONDUCTOR RESISTANCE: ≤5Ω 300V DC

<b>SFCABLE.COM</b>			
DRAWN BY	DATE: 2013/06/01	DESCRIPTION: XLR 3P Male to RCA Male Cable	
CHECKED BY	SHEET 1 of 1		
APPROVED BY	SCALE 1:1	REV. 00	UNIT: mm

⑥	Cable	Cable (15/0.10)+ 28/0.10 OD.: 6 Black PVC Jacket	1	PC
⑤	Shell	PVC Black	1	PC
④	Shell	Metal-Nickel Plated	1	PC
③	RCA Male	RCA Male-Nickel Plated	1	PC
②	Shell	Metal-Nickel Plated	1	PC
①	XLR 3P Male	XLR 3P Male	1	PC
NO.	PART NAME	SPECIFICATION DESCRIPTION	Q'TY	UNIT