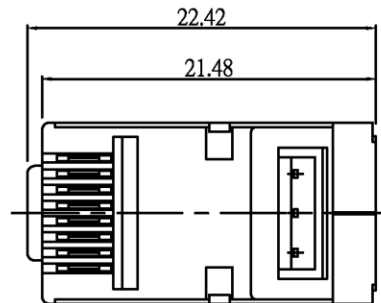
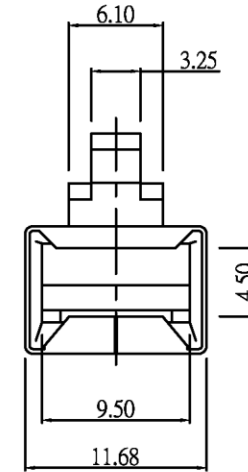
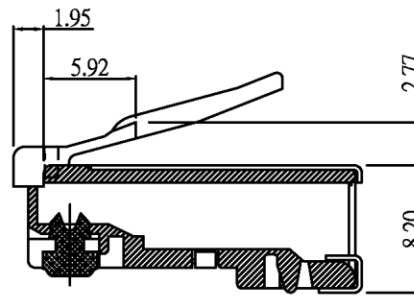
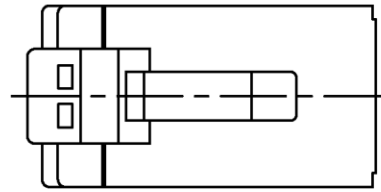
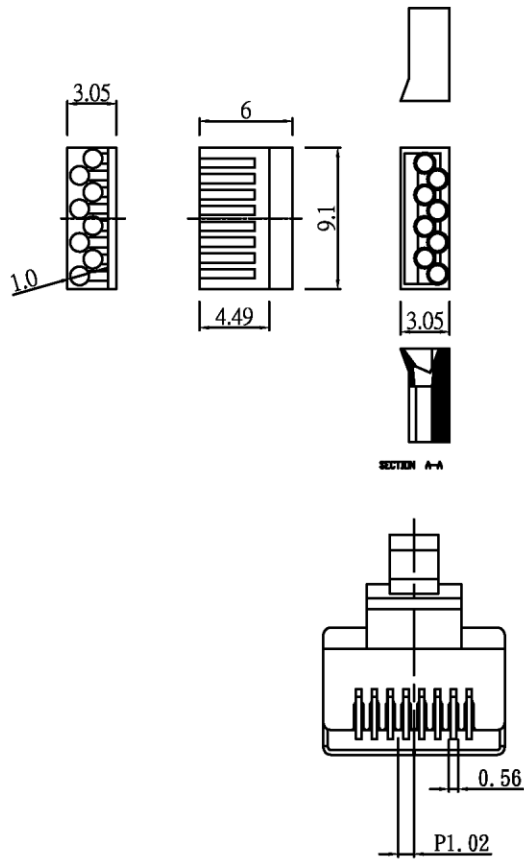


SPECIFICATION MECHANICAL:

1. Housing Material: Polycarbonate, UL 94V-2. NO Poison
2. Material Contact: 6U" Below Brass.
15U" Above Phosphor Bronze.
3. Material Shell : Brass.
4. Contact area plated gold over 3U"/6U"/15U"/30U" and 50U", the other area plated gold over FU".
5. Contact area plated Nickel over 60U", the other area plated Nickel over 30U".
6. Housing Color: Transparence.
7. Operation Temperature: -40°C to 80°C.



NOTE TOL: ±0.1

版本	A	繪圖	日期	2004/11/11	品名	68PG-6A-S
3RD	☉ ☽	核對	日期		規格	雙排-F 銅殼 二件式 斜度2.6支架
單位	m/m	核准	日期		圖號	
比例	1/1		日期			

