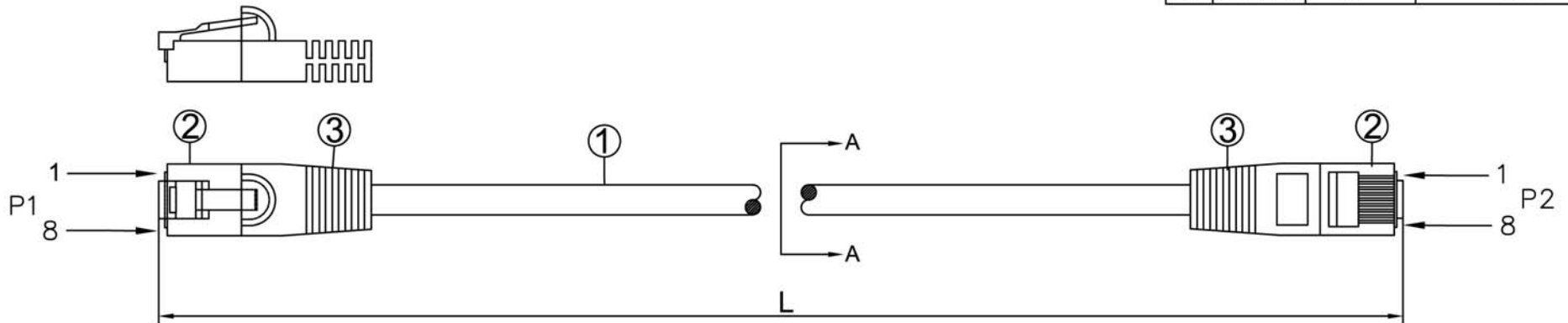


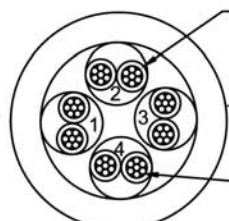
NOTE:ALL MATERIAL COMPLIANT ROHS STANDARD

REVISION INFORMATION			
Rev.	Rev. Date	Modified By	Brief Description
A/0	2015.05.11	LM	NEW



INK MARKING:YFC UTP CAT.5E 350MHZ PATCH ISO/IEC 11801 & EN 50288 & ANSI/TIA-568-C.2 3P CONFORMS TO GIGABIT ETHERNET ▲ 24AWGX4P TYPE CMX(UL) C(UL) CMH E164469-XX

Jacket Color
BK012
BU608
GN509
GY177
OR307
RD210
RD220
PU720
WH928
YE406



INSULATION:HDPE Thickness:0.2±0.05MM  
OD=0.85±0.05mm

JACKET:PVC Thickness:0.6±0.1MM  
OD=5.3±0.2mm

CONDUCTOR:[24AWG(7/0.175±0.008mm) BC]X4P

orange 1	green 2
white/orange	white/green
blue 3	brown 4
white/blue	white/brown

PINOUT		
P1	WIRE	P2
1	WHITE/ORANGE	1
2	ORANGE	2
3	WHITE/GREEN	3
6	GREEN	6
5	WHITE/BLUE	5
4	BLUE	4
7	WHITE/BROWN	7
8	BROWN	8

L(ft)	T(inch)	T(%)	L(ft)	T(inch)	T(%)
0.5	±0.6	10%	15	±3.15	1.75%
1	±1.2	10%	20	±4	1.67%
1.5	±1.2	6.67%	25	±4	1.33%
2	±1.2	5%	30	±6	1.67%
3	±1.2	3.33%	35	±6	1.43%
4	±1.2	2.5%	40	±6	1.25%
5	±1.2	2%	50	±6	1.0%
6	±1.2	1.67%	75	±6	0.67%
7	±2	2.38%	100	±6	0.5%
8	±2	2.08%	125	±6	0.4%
9	±2	1.85%	150	±6	0.33%
10	±2	1.67%	175	±6	0.29%
12	±2	1.39%	200	±6	0.25%

2	PVC YU-19	MOLD	3
2	8P8C 50U RJ45	PLUG	2
1	CAT.5E UTP PVC 24AWG*4P BC	CABLE	1
QTY	SPECIFICATION	ITEM	NO.

DRAWN BY LM	DATE: 2015/05/11	DESCRIPTION: LAN PATCH C5E UTP 24AWG 4P
CHECKED BY JZY	SHEET 1of1	
APPROVED BY LANDER	SCALE 1:1	REV. 00 UNIT:mm