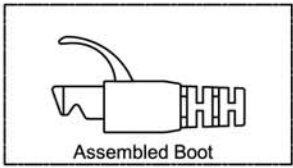
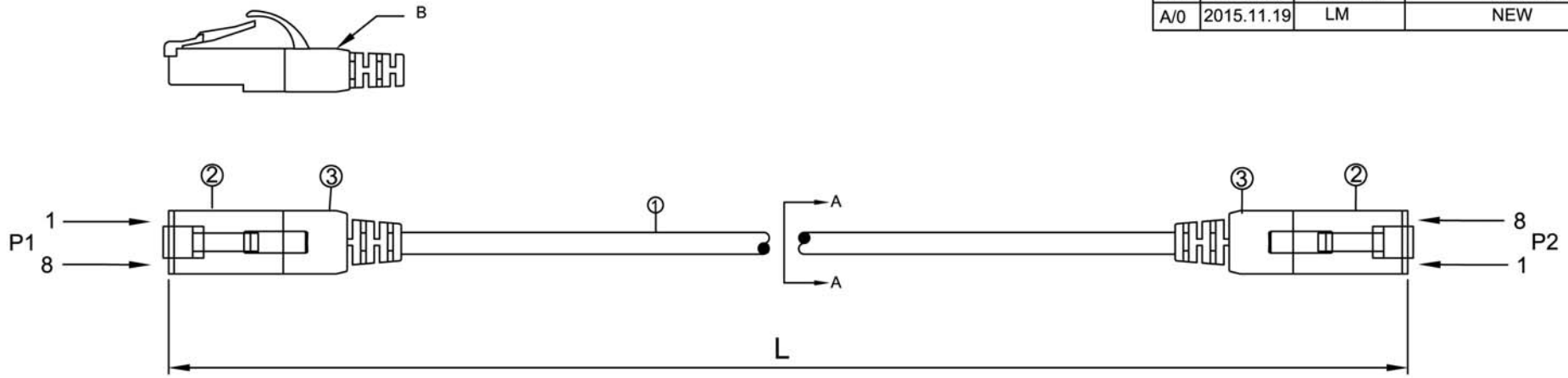
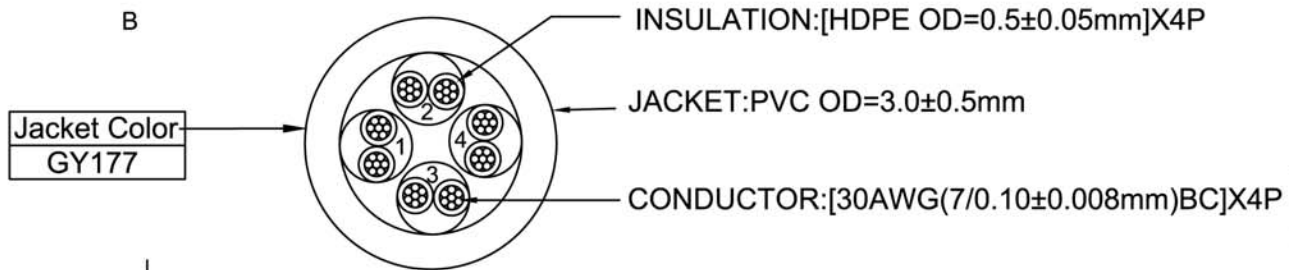


NOTE: ALL MATERIAL COMPLIANT ROHS STANDARD

REVISION INFORMATION			
Rev.	Rev. Date	Modified By	Brief Description
A/0	2015.11.19	LM	NEW



INK MARKING: YFC CAT.6 UTP PATCH CONFORMS TO ANSI/TIA-568-C.2 & ISO/IEC 11801 30AWGX4P



orange 1	green 2
white/orange	white/green
blue 3	brown 4
white/blue	white/brown

SEC:A-A

PINOUT		
P1	WIRE	P2
1	WHITE/ORANGE	1
2	ORANGE	2
3	WHITE/GREEN	3
6	GREEN	6
5	WHITE/BLUE	5
4	BLUE	4
7	WHITE/BROWN	7
8	BROWN	8

L(ft)	T(inch)	T(%)	L(ft)	T(inch)	T(%)
0.5	±0.6	10%	6	±1.2	1.67%
1	±1.2	10%	7	±2	2.38%
1.5	±1.2	6.67%	8	±2	2.08%
2	±1.2	5%	9	±2	1.85%
3	±1.2	3.33%	10	±2	1.67%
4	±1.2	2.5%	12	±2	1.39%
5	±1.2	2%	15	±3.15	1.75%

QTY	SPECIFICATION	ITEM	NO.
2	PVC Transparent	BOOT	3
2	8P8C 50U RJ45	PLUG	2
1	CAT.6 UTP 30AWG*4P PVC GY177	CABLE	1

DRAWN BY LM	DATE: 2015.11.19	DESCRIPTION: C6 SLIM UTP(W/O Cross) 30AWG 4P PVC CMH Molding GY177
CHECKED BY JZY	SHEET 1of1	
APPROVED BY LANDER	SCALE 1:1	REV. 00 UNIT:mm