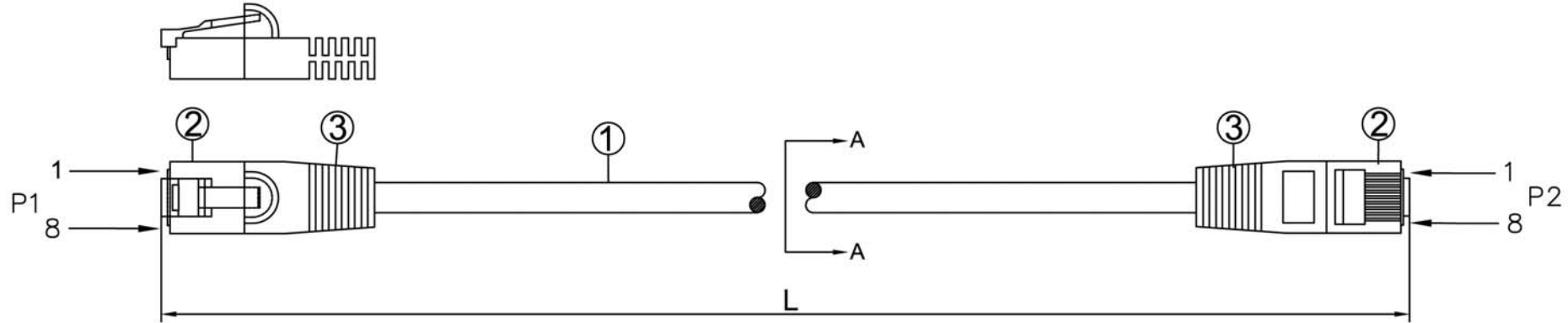
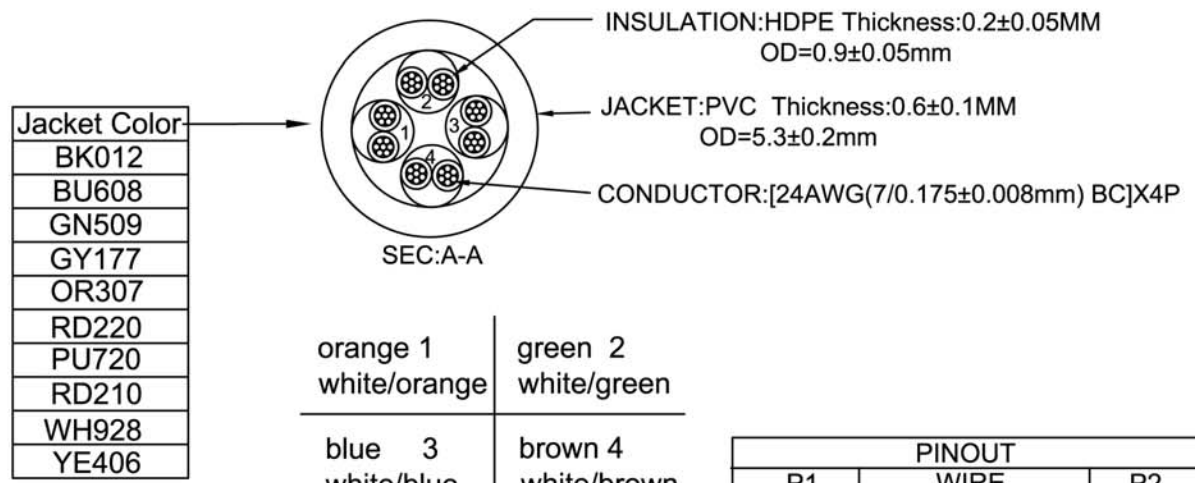


NOTE:ALL MATERIAL COMPLIANT ROHS STANDARD

REVISION INFORMATION			
Rev.	Rev. Date	Modified By	Brief Description
A/0	2015.05.11	LM	NEW



INK MARKING:YFC CAT.6 UTP ISO/IEC 11801 & EN 50288 & ANSI/TIA-568-C.2 ETL/3P VERIFIED ▲ 24AWGX4P PATCH TYPE
CMX(UL) c(UL) CMH E164469-XX



L(ft)	T(inch)	T(%)	L(ft)	T(inch)	T(%)
0.5	±0.6	10%	15	±3.15	1.75%
1	±1.2	10%	20	±4	1.67%
1.5	±1.2	6.67%	25	±4	1.33%
2	±1.2	5%	30	±6	1.67%
3	±1.2	3.33%	35	±6	1.43%
4	±1.2	2.5%	40	±6	1.25%
5	±1.2	2%	50	±6	1.0%
6	±1.2	1.67%	75	±6	0.67%
7	±2	2.38%	100	±6	0.5%
8	±2	2.08%	125	±6	0.4%
9	±2	1.85%	150	±6	0.33%
10	±2	1.67%	175	±6	0.29%
12	±2	1.39%	200	±6	0.25%

QTY	SPECIFICATION	ITEM	NO.
2	PVC YU-19	PLUG	3
2	8P8C 50U RJ45	PLUG	2
1	CAT.6 UTP PVC 24AWG*4P BC	CABLE	1

PINOUT		
P1	WIRE	P2
1	WHITE/ORANGE	1
2	ORANGE	2
3	WHITE/GREEN	3
6	GREEN	6
5	WHITE/BLUE	5
4	BLUE	4
7	WHITE/BROWN	7
8	BROWN	8

DRAWN BY LM	DATE: 2015/05/11	DESCRIPTION: LAN PATCH C6 UTP 24AWG 4P
CHECKED BY JZY	SHEET 1of1	
APPROVED BY LANDER	SCALE 1:1	REV. 00 UNIT:mm