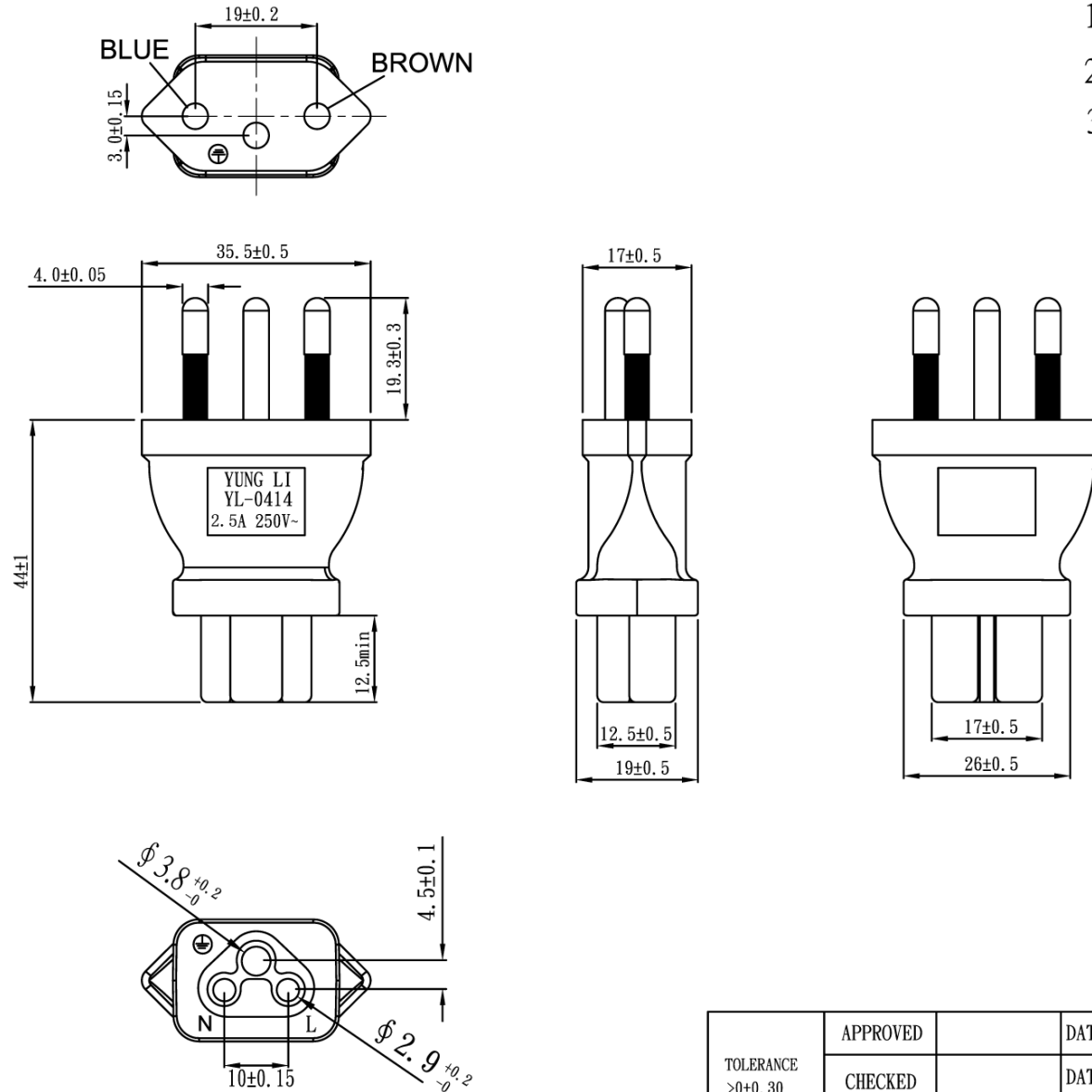


IEC 60320 C5 to NBR 14136

Note:

1. Rating: 2.5A 250V
2. Insulation Resistance: 100MΩ
3. Dielectric Voltage: 2000V/sec



TOLERANCE >0±0.30 >1.0±0.50 >10.0±1.0 >20.0±2.0 Angle: ±1°	APPROVED		DATE		SFCABLE.COM				
	CHECKED		DATE						
	DRAWN		DATE		CUSTOMER				
	TYPE	YL-0414			P/N				
DRAWING NO.	CY-A0414	REV	B	SCALE	1:1	MATERIAL	P. V. C	UNIT	mm