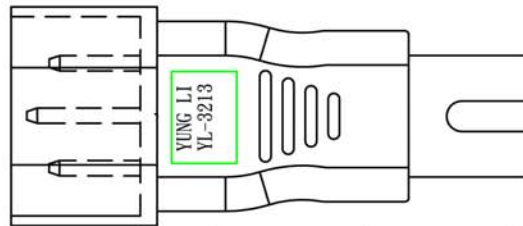
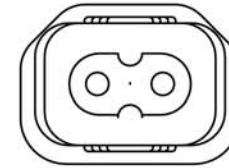
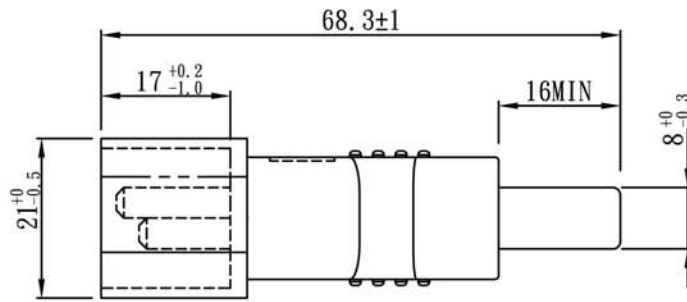
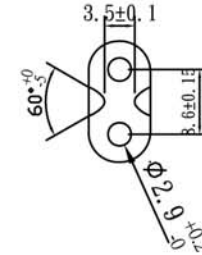
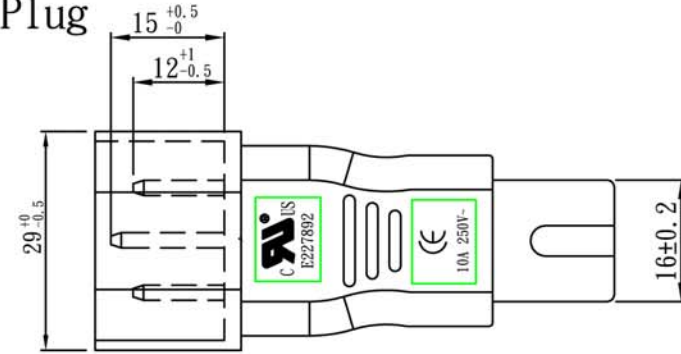
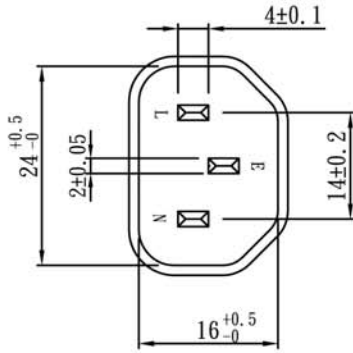




IEC 60320 C7 to IEC 60320 C14 Plug



Note:

1. Rating: 10A 250V
2. Insulation Resistance: 100MΩ
3. Dielectric Voltage: 2000V/sec

TOLERANCE >0 ± 0.30 >1.0 ± 0.50 >10.0 ± 1.0 >20.0 ± 2.0 Angle: ±1°	APPROVED		DATE				
	CHECKED		DATE				
	DRAWN		DATE		CUSTOMER		
	TYPE	YL-3213			P/N		
	DRAWING NO.		REV	B	SCALE	1:1	UNIT